

## Xlaslide

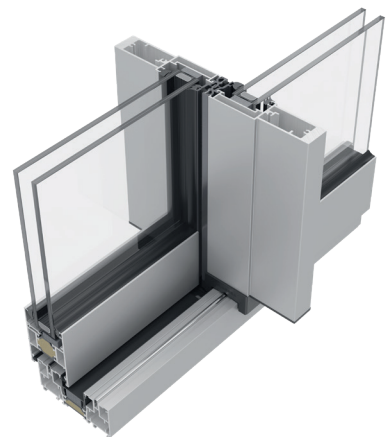
Sliding patio door.

Connecting the internal and external space, giving significance to glass is a trend in architecture. Xlaslide patio door, with its modern design focused on its slim sightlines, provides an extraordinary connection with the outside, maximizing the sunlight entry into the room.



### Features

- Complete range of interlocks options
- Double or triple glaze
- Twin & Triple track options
- Internally beaded for extra security
- New fully concealed frame option available
- High effective water drainage solution
- High Insulated version
- Compatibility with Exlabesa systems and accessories range



# TECHNICAL FEATURES

**Design**  
Thanks to its slim sightlines and invisible outer frame, the Xlaslide system is perfectly suited for contemporary large-format sliding doors, ensuring a seamless connection and full accessibility between the inside and outside with a slim interlock detail of only 32 mm helping to fill the space with uninterrupted natural light.

**Features**  
This internally beaded system allows a sash size of 2500x2500 mm with a maximum of 200 kg per sash. Fully compatible with the Exlabesa range of accessories, it can be coupled to Exlabesa 75 mm systems to offer fixed or opening side lights.

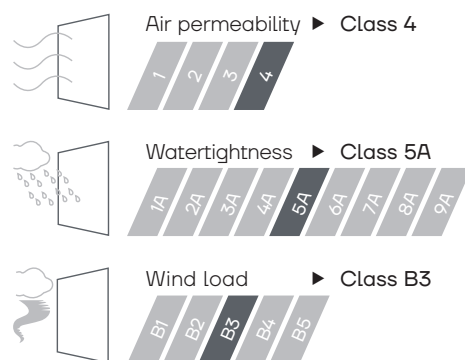
**Benefits**  
The outstanding adaptability and smart design of the Xlaslide set the trend for a cost-effective, fabricator-friendly solution with excellent specifications. Made in Britain to exceed current Building Regulations.

**Possibilities**  
The Xlaslide sliding system provides advanced options as a fully concealed frame, water drainage solution and triple track. A range of different interlocks is also available, including standard, slim and reinforced, along with a high insulated version for the most demanding projects. For an ultra-smooth action, Xlaslide owns bespoke high specification, adjustable and heavy-duty roller system.



Maximum leaf size	2500x2500 mm
Maximum weight	200 kg
Maximum glazing	36 mm
Polyamide	24 mm
U <sub>w</sub> value	1,4 W/m <sup>2</sup> K

Weather tests according to standard BS6375-1



✓ BS6375-1    ✓ PART L    ✓ PART M

