

Xlafold

High performance
bi-folding door system



Cost-effective. Unbeatable performance.

Aluminium bi-folding doors are now one of the most popular patio door options for both residential and commercial installations. From streamlined bi-folding door shopfronts to innovative folding curtain wall applications, their wide opening capacity, customisable configuration, and exceptional levels of thermal and security performance have made them the first choice for aspirational developers and end-users alike.

The **Xlafold** aluminium bi-folding door system is designed to optimise both style and performance. To trade and aluminium fabricators, it offers a wide range of customisation configurations and can be easily used for a range of design applications.

A robust aluminium bi-folding door that offers a seamless transition to outdoor living with a superb aesthetics and a strong performance. This system maximises the glazed area thanks to its sleek, slimline aluminium profiles which deliver maximum light appeal.

Fabricator friendly and cost-effective solution

Xlafold has been designed to guarantee full compatibility with Exlabesa systems and accessories range allowing to use standard Exlabesa corner cleats, gaskets, stainless steel tracks, beads, cills or add-ons.

Made in Britain, this bi-folding door stands out as the best option for a cost-effective and fabricator-friendly solution due to its unbeatable performance and ease of fabrication and installation.

Massive. Beautiful.
Efficient.



Features

- U-value as low as **1,2 W/m²K**
- Half rollers available for even panel number configurations
- Square or curved design available
- Internally beaded for security
- Open in and open out doors available
- “Master” doors with **3 points locking** available
- French door opening configuration available
- High Insulated version available

✓ PAS 24 Security

✓ PART L





Option
SQUARE DESIGN



Option
ROUNDED DESIGN



FRENCH DOOR VERSION

The Xlafold bi-folding door introduces a new French door opening configuration, designed to provide highly functional, robust, and durable door solutions. These doors are perfect for enhancing airflow and natural light within the home, while presenting a sleek and sophisticated look.



DESIGN

Xlafold maximizes the glazed area with its slimline aluminium profiles, creating sleek and modern bi-fold doors that enhance the visual appeal of any room while delivering maximum light.

FEATURES

It has an ultra-smooth action, even in heavy sashes of maximum 100 kg. This system uses high quality and heavy-duty rollers, including a half roller option which ensure uniform pane widths for enhanced visual appeal. Furthermore, Xlafold is PAS24 accredited, providing the highest level of security assurance.



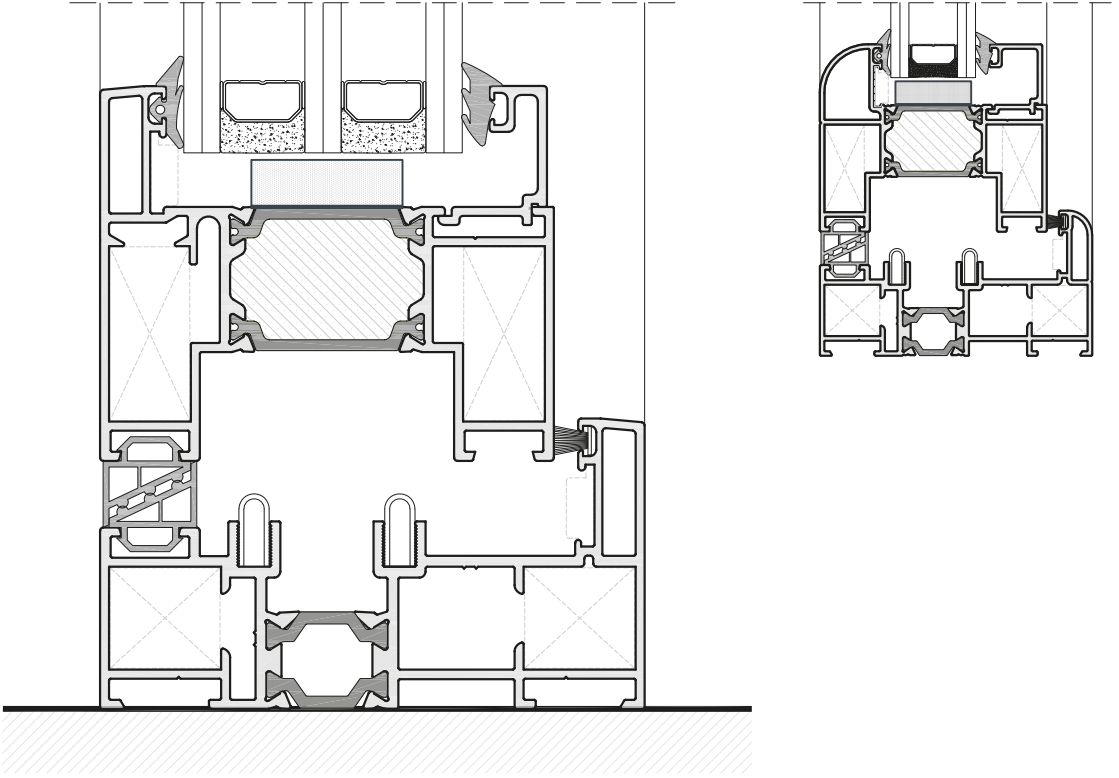
POSSIBILITIES

Xlafold facilitates glazing options from 10 to 49 mm, making it compatible with double or triple glaze units. High Insulated version available for the most demanding projects. It incorporates a low threshold cill option with a "clip" on ramps either side, enhancing the design options for the system.

BENEFITS

Compliant with Part L standards, the system also holds a PAS 24 certificate for the French door opening version. This fabricator friendly system offers a cost-effective solution, fully customisable that fits both residential and commercial installations.

Massive. Beautiful.
Efficient.



Maximum sash size

1000x2400 mm

Maximum weight

100 kg

Maximum glazing

49 mm

U_w value

1,2 W/m²K

✓ PAS 24 Security

✓ PART L

Air permeability

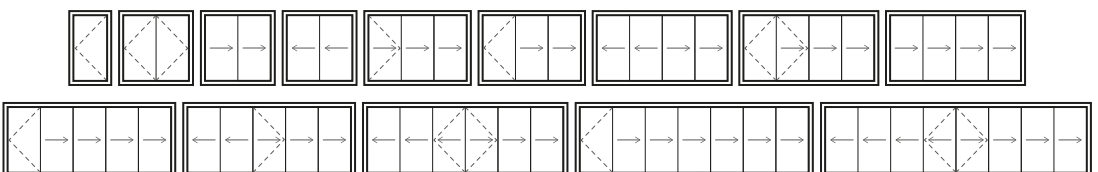
Class 3

Watertightness

Class 8A

Wind load

Class C3





Exlabesa Building Systems Ltd.

Ogden Road - Wheatley Hills
DONCASTER DN2 4SG
Tel. +44 01302 762500 Fax +44 01302 762557
www.exlabesa.co.uk

QUALICOAT | ISO 9001 | PAS 24:2016

